

THE PITCAIRN LOG

A PUBLICATION OF
THE PITCAIRN ISLANDS
STUDY GROUP

WWW.PISG.NET

October-December 2008

Volume 35 Number 4

www.pisg.net



KONINKLIJKE ROTTERDAMSCH LLOYD



Mr. + Mrs. Wirth H. Murray

3485 Main Highway

Coconut Grove 33

**The Story of the
Willem Ruys**
(See article on page 2)

Off shore PITCAIRN Nov. 30
This is an unscheduled stop and we
are not going ashore. We are hoping
to have some of the inhabitants come
aboard to display their handicraft
and the ship has made arrangements
for having our postcards stamped
and forwarded (boat mail only) by the
Pitcairn authorities. (I shall be at home
d.v., before they arrive, no doubt). R.B.G.



The Story of the *Willem Ruys* BY STEVE PENDLETON

Many vessels have visited Pitcairn and I'm sure they have stories to tell. Certainly however, that of the *Willem Ruys* is one of the most interesting and tragic. I first encountered this ship when, many years ago, I purchased a cover sent by Roy Clark. It didn't have a Pitcairn cancel, but was one of his pictorial cacheted creations. It bore a ship cancel which read "Post-agent Willem Ruys" (Figure 1). And for a long time that was all I knew about it.

After reading Dave Ransom's Pitcairn Postcard List, I noted a set of postcards about Pitcairn issued by the shipping company that operated the *Willem Ruys*, the Rotterdam Lloyd Lines. This meant that the ship was a regular island visitor. The existence of the *Willem Ruys* was a result of a competition between the Lloyd Line and another Dutch company. The aim was to provide fast and comfortable service between The Netherlands and the Dutch East Indies (now Indonesia). Construction began in 1939, but was interrupted by the Second World War. When completed in 1946 she was 21,119 tons, with four classes of passenger accommodation, including 645 first and second-class berths.

The first tragedy associated with the ship was its name. Willem Ruys was the great grandson of the company founder. The Germans shot him during WWII.

During the 1940s and 1950s the *Willem Ruys* sailed the Netherlands-East Indies route (via Suez). But in 1959 the route changed. Now voyages were between Australia, New Zealand and The Netherlands, which meant that she now transited the Panama Canal. This resulted in many stops at Pitcairn between 1959 and 1964.

Evidently there was much interest in the island by the passengers. Dave Ransom reports that a set of ten black and white postcards were prepared by the company. A few years later a set of seven hand colored cards with the same scenes were issued (Figure 2 – shows an islander boarding by rope ladder). At least three other cards associated with the ship are known. On one of its visits, the ship's mail overwhelmed the island post office. No less than 1,700 postcards were cancelled. The postmaster must have been canceling at a furious pace.



Figure 2

Continued on Page 18 ...

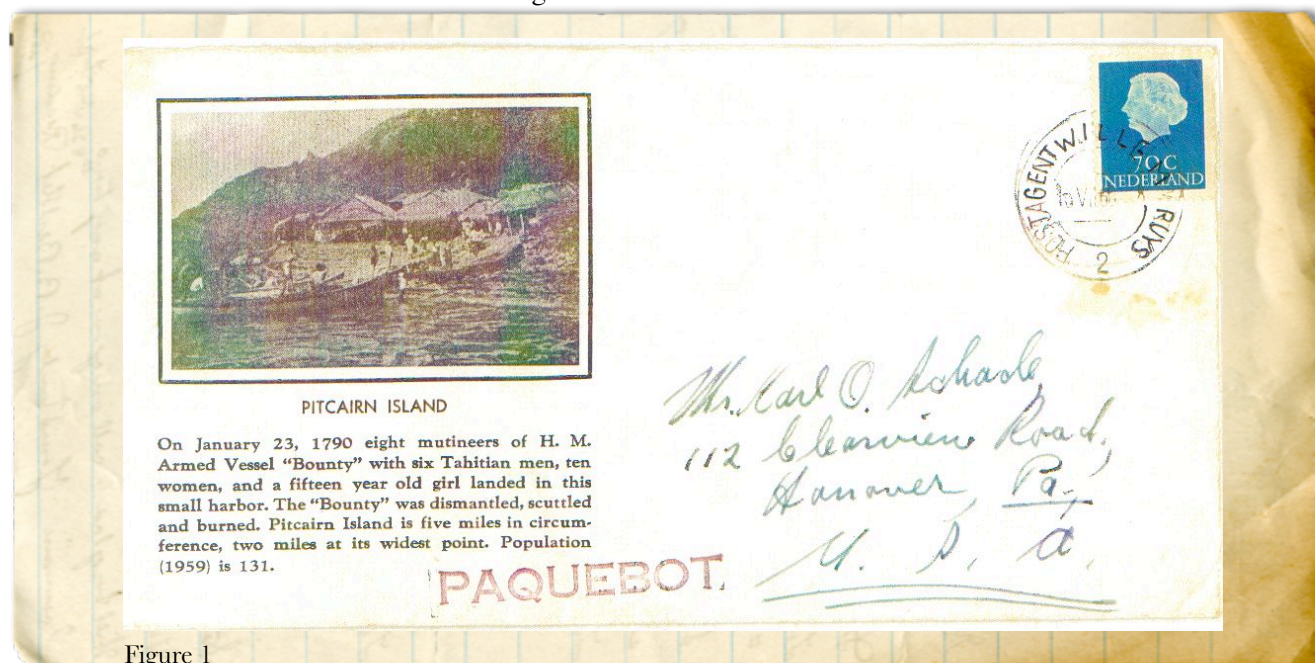


Figure 1



PISG Team

President Mark A. Butterline
(Term ends 2009)
6 Carbone Circle
Maynard, MA 01754
mbutterli@comcast.net

Vice President Ted Cookson
(Term ends 2009)
3501 Keyser Avenue - Villa 38
Hollywood, FL 33021-2402
tedcookson@gmail.com

Secretary Barbara J. Kuchau
(Term ends 2009)
15411 97th Drive
Live Oak, FL 32060
pisgsecretary@yahoo.com

Treasurer Brad Brunzell
(Term ends 2009)
P.O. Box 12
Milton, MA 02186-0002

Director Steve Pendleton
(First Term ends 2013)
3006 Mary Ave. W.
Visalia, CA 93277
SPENDL@peoplepc.com

Director Mitchell Bunkin
(Second Term ends 2011)
204 Cafferty Road
Pipersville, PA 18947
bhive@ptd.net

Director James F. Bailey Jr.
(First Term ends 2009)
P.O. Box 937
Brownswood, TX 76804
jfbailey@web-access.net

Immediate Past President
Everett Parker
719 Moosehead Lake Road
Greenville, ME 04441-9727
eparker@hughes.net

Librarian/Archivist
Jerry Jensen
10900 Ewing Avenue South
Bloomington, MN 55431
jerry@gps.nu

APS Representative
Open

ATA Representative
Wendy Niem
6325 B Avenue
Otter Rock, OR 97369
wniem@charter.net

Advertising Manager
Barbara Kuchau

Webmaster
Mark Butterline

Production Editor
Marianne Butterline

Managing Editor
Steve Pendleton

Contents

The Story of the <i>Willem Ruys</i> by Steve Pendleton	2
The Editor's Page	4
Secretary's Report	4
From the President	6
The Treasurer's Report	6
Book Review - Pitcairn Island, the <i>Bounty</i> Mutineers and Their Descendants by Robert W. Kirk	7
A Letter from Ian Christian by George Speirs	8
Varieties of the Curteich Boat's Shed Card by David Ransom	9
Future Issues of Pitcairn Stamps by Wilfred Bloom	13
Terns and Noddies, Again by Jerry Jensen	15
PISG at Hartford	16
Auction Watch	17
Unique Carving on the <i>Britannia</i> by Ted Cookson.....	18
Flowers and Bees Stamp Issue	20

Membership Information, Etc.

Memberships are in two categories: Regular and Contributing. The fees are: REGULAR: \$20 per year USA and Canada and \$25 per year elsewhere; CONTRIBUTING: \$30 per year or more. Life memberships are available (contact the president). The *Pitcairn Log* is sent by First Class International to non-USA members and by Standard Class to USA members. Opinions expressed are those of the authors and not necessarily those of PISG. Advertising is available at \$50 per full page, \$25 per half page, and \$15 per quarter page per issue, payable in advance. Contact the Advertising Manager for additional information or to schedule advertising. Inserts are also possible and must be arranged through the Managing Editor.

The *Pitcairn Log* is published in January, April, July and October. Submissions should be sent to PISGLog@gmail.com. Submission deadlines are November 1, February 1, May 1, and August 1, respectively. The *Pitcairn Log* is the official publication of the Pitcairn Islands Study Group.

APS Affiliate No. 46

PISG was founded in the USA in 1973.





The Editor's Page BY STEVE PENDLETON

Last issue I asked for comments, positive or negative, about how the *Log* was doing. Well, be careful of what you wish for...at least, about three items. On page 15 of the last issue, I failed to identify the Pitcairners holding the *Bounty* pieces. One is Bradley Christian, the other an off-islander.

Also criticized was the lack of balance in the articles of that issue-too many stamp articles was the comment. That happened, but it wasn't planned that way. This issue's postcard article was to have appeared last issue. However, problems as to which articles needed color caused us to change the issue.

Finally, Jerry Jensen's article did not have guide headlines. We didn't put in guides when we printed the article on different pages. We are hoping that problem will be eliminated when/if we go all-color. Well, I have kissed the gunner's daughter for these mistakes.

There are several members who should be recognized for various feats: CHARLES ANDERSON for having

several articles published, in *Mekeel's* and other publications. One of these was a sports article. (I won't tell you which team it was about, but they growl a lot.)

MAURICE ALLWARD for contributing a LOT of Benjamins-or is it Elizabeths-to the island. (See page 12 for details).

MARCIA FOX for contributing a bunch of parcel wrappers to the PISG Auction. Nice stuff, Marcia!

And finally, OUR FEARLESS LEADER for receiving a very nice compliment from Hal Vogel (Caudillo of the American Society of Polar Philatelists) in print (the *Upland Goose*, organ of the Falkland Islands Study Group). The compliments were in recognition of Mark's organizing efforts at the Portland APS convention in 2007.

Barbara Kuchau also reminds me to ask members for any personal honors, births, deaths or accomplishments. We'd love to read about you!

Two PISG Publication Updates

An update to *The Pitcairn Islands Specialized Stamp Catalog* by Vernon Kisling has just been issued. The price is \$6.50 postpaid in the USA, \$8.95 postpaid to Canada, and \$11.95 postpaid elsewhere.

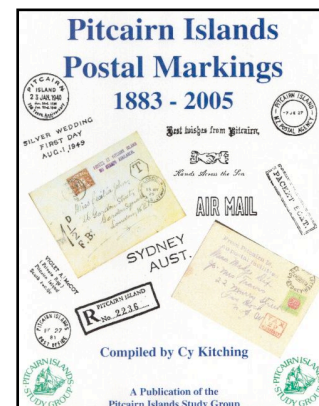
An update has also just been issued for the *Pitcairn Islands Postal Markings* catalog by Cy Kitching. The price is \$5.95 postpaid in the USA, \$8.25 postpaid to Canada, and \$10.95 postpaid elsewhere.

A special combo offering with both updates is available at the special discount price of \$10.95 postpaid in the USA, \$12.95 postpaid to Canada, and \$16.95 postpaid elsewhere.

Orders (check or money order) should be sent directly to Everett Parker (address on page 3).

These updates are also available for purchase on the PISG website. However, prices are \$2 higher to cover PayPal charges.

Please note also that the prices of the existing line of PISG publications have recently been increased due to higher postage and paper costs. See the website for more information and new pricing. Enquiries can also be sent directly to Everett Parker.





Secretary's Report BY BARBARA J. KUCHAU

NEW MEMBERS:

Maria P. Adams (#1566)
Huntington Station, NY

Eric Remy (#1567)
Fairfield, CT
E-mail: ericremy@optonline.net

Henry-Michel Dumont (#1568)
Grasse, France

Jens Fahmel (#1569)
Dusseldorf, Germany

REINSTATEMENTS:

Nadine Christian

LIFE MEMBERSHIPS:

LM #72
Dr. Harold D. Frank

RESIGNATIONS: 0

ADDRESS CHANGES:

Frode Eriksen
Oslo Norway

Paul T. Williams
High Point, NC

James Gramarossa
Plainville, CT

E-MAIL CHANGES:

Barry Christie
monk28@shaw.ca

NON RENEWALS:

Charles J. Holtz
Carol A Houseman
David Langan
Horace D. Orr
Richard M. Pompilio
Barbara D. Reaney
Dr. William Schipper
Donald W. Strong
Richard A. Thayer
Philip T. Warrington
Sanford Wong

NECROLOGY:

Frederick L. Hall #721

CORRECTIONS: 0

STATISTICAL SUMMARY

Membership (4/30/2008): **394**

New Members: 4
Reinstatements: 1
Resignations: 0
Non-renewals: 11
Deaths: 1

Membership (7/31/2008): **387**



Pitcairn Trivia

(answers on page 13)
by Barbara Kuchau

1. To whom is this quote attributed? "We will never leave you, Mr. Christian, go where you will!"
2. In August, what important crops are harvested on Pitcairn?
3. Who is the Pitcairn Museum curator?



Congratulations are due member Gerard York of Tallahassee, FL. and Anastasia Mixaylovna Gatsuseva of Korolev, Russia. They were married in Florida on Sept. 14, 2007.

Please note that all changes in membership should be reported to the Secretary.

See page 3 for contact information. Thank you!



From The President BY MARK BUTTERLINE

Hello Fellow PISGers!

Welcome to the Fall issue of the *Log*. Thanks yet again to our editors and authors for another fine issue.

On August 14 to 17, PISG was present at the annual APS StampShow, staged this year at the Connecticut Convention Center in Hartford, Connecticut. A general membership meeting with member presentations was held, as well as our first in-person Board of Directors meeting in a number of years. See pictures on page 16 and our website.

At the Board meeting, the Directors voted to try a special all-color issue of the *Log* (the schedule for this issue is still to be decided). The Board also decided to offer an

electronic subscription to the *Log* starting in the Fall of 2009.

For folks who can't get enough of the democratic process, the next PISG election cycle is now starting. If you are interested in running, please contact someone on the nomination committee (Steve Pendleton or Mitch Bunkin – they are the board members who aren't running this time around).

Finally, the all new PISG Auction is still open (till September 30). Check the auction catalog on the website.

That's it for now.

Mark

The Treasurer's Report BY BRADLEY W. BRUNSELL

First, and of primary importance, kindly check the mailing label on this *Log* envelope. If the expiration date reads "8" then it is time for you to renew as soon as possible. Please keep in mind that sending out "reminder notices" is both time consuming and costly to the Group. Thus your cooperation in this vital matter will be greatly appreciated!

Second, as has been our tradition for many years, we now present our "Top 40 Earlybirds," those members who paid their annual dues most promptly. In order of receipt, we salute: Denis J. Donahue, Clifford L. Sayre, Robert Quintin, Joseph Chalfin, Lee T. Turner, Barbara B. Fosdyke-Ray, William D. Chisolm, Rex Hickox, Richard T. Crowe, and Earl C. Gersheim.

Also, Terrence M. Gamble, Carolyn S. Ash, Derek S. Williams, Don A. Roth, Charles J. Dietz, Marion E. Zahler, Allen E. Stacho, R. W. Weathersby, Mark H. Bloch, Richard F. Potter, James E. Brill, Dale E. Frye, Loris DeGaspari, Rob P. van Bruggen, John E. Sutcliffe, Laurence R. Fusselman, Peter D. Caldwell, Paul M. Shaffer, Ernest M. Wrech, and Walter J. Kramarski.

And rounding out our Top 40, Russell L. Kaldenberg, John W. Pagliano, Jean Ann Capozzi, Mark J. Halvorson, Dr. David Torres, Gregory Carrubba, Ray Joyce, Vernon N. Kisling, Dr. Peter P. McCann, and Dr. Edwin F. Price. To the foregoing, we extend our heartfelt thanks... and to everyone who has renewed in a timely fashion, we express our gratitude!

Finally, one of our members, Dave Gardner of California, contacted me about an authenticated signature of *Bounty* crew member Peter Heywood which he has in his collection. Anyone who has an idea as to its value, or who may be interested in acquiring it, is encouraged to get in touch with Dave at 1-949-646-1274.





Book Review BY STEVE PENDLETON

Pitcairn Island, the *Bounty* Mutineers and Their Descendants

Robert W. Kirk

McFarland Publishers

Jefferson, NC 28640

website www.mcfarlandpub.co

ordering phone line 1-800-253-2187

263pp hardcover, price \$55

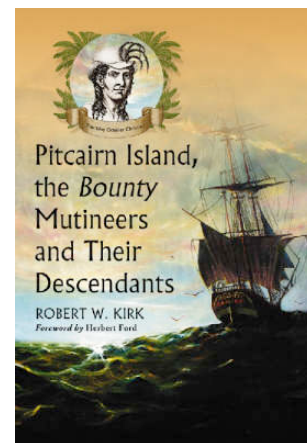
Mr. Kirk points out at the beginning of this book that over 1,200 titles have been published about the *Bounty* mutiny, and Pitcairn Island. This is probably the most books written about any island. Some have been factual and fair, others either utopian or hypercritical. Take your pick.

My first reaction on opening the parcel containing this book was simply, why another Pitcairn book? What else that's new and interesting can possibly be published? The answer is, quite a bit. For one thing, Kirk's volume is very up to date, including a lot of new information about the series of trials, the appeals and current status of those incarcerated. There is also an account of many of the new projects being planned-many of which might actually get completed.

As the author points out, the last 6 years have probably been the most important in the islands' life since the years of settlement after the mutiny. For those whose obsession includes the mutiny, Mr. Kirk even has a somewhat novel explanation for its occurrence. And that is--ah, but you'll

have to read the book to find out.

I can also think of few other sources which contain as detailed a description of island history. Many letters are quoted, as well as the *Pitcairn Register*. I also didn't realize just how dangerous a place Pitcairn is, until I read the author's many accounts of broken bones, emergency surgeries and even deaths which have happened there.



I found the author's style and organization very easy to follow, with a lot of helpful subtitles. This book can be very easily used as a reference. Philatelists will find it particularly helpful as a source of information about the background of various stamp designs.

If you have had the privilege of meeting any of the current islanders, this book will help you relive those fond memories. I would expect it would be the same for anyone fortunate enough to have stayed on the island.

The author is a semi-retired history professor living in California. He served as a ships' lecturer on two voyages to Pitcairn.

PISG Auction

September 30 is the closing date of our newest club auction. There are a number of unusual items up for bid including several authentic jail mail pieces, several lots of commercial covers (long *Miscellany* mainly), recent parcel wrappers, postcards, painted hattie leaves and even a dear doctor postcard. Visit the website for the complete auction catalog. Steve is accepting bids electronically at SPENDL@peoplepc.com. Please remember that when you bid in these auctions you are helping PISG!





A Letter From Ivan Christian BY GEORGE SPEIRS

Philatelists can often repay the cooperation and tolerance of isolated islanders. Perhaps the most common is to offer a helping hand to the person, in obtaining things they need. For example, I corresponded with the famous 'hermit of Suwarrow,' Tom Neale for years. Reading was his great passion so I would often send him books and magazines.

A letter in my collection from Ivan Christian, is another example of a stamp collector trying to help an islander. This letter was sent to New Zealand in 1940—one of the darkest years of World War II. In it, he asks for butcher meat from a specific shop in Auckland. He also says he is enclosing a sample of the sort of meat he wanted.

Now, if indeed a piece of meat was enclosed, the mind begins to boggle a bit in imagining the condition it was in when it reached New Zealand—not to mention the smell. I also wonder if he sent the first day covers, stamps and meat together in one parcel. If the meat could be purchased, Ivan requested it be sent by post. At that time, mail generally took about a week to get to Pitcairn from New Zealand—but presumably it wasn't frozen.

In December of 1940 refrigeration-equipped ships would have been engaged in delivering lamb to England as quickly as possible. It's pretty doubtful that a ship would have been allowed to stop at Pitcairn to unload such a parcel.

We will never know if Ivan actually received his parcel of meat. However, it is interesting to note that a stamp collector was asked to help out.

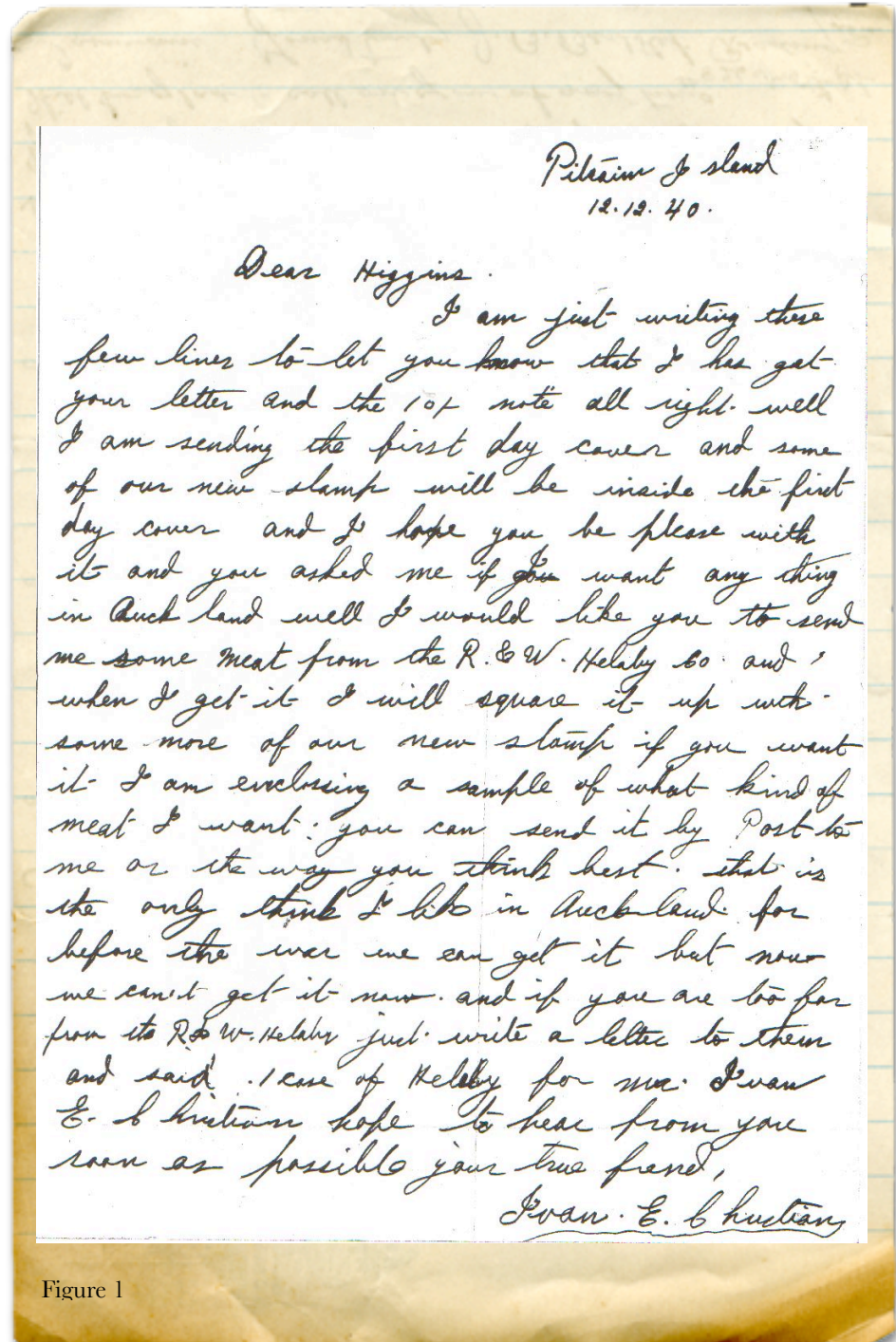


Figure 1



Varieties of the Curteich Boat's Shed Card

BY DAVID RANSOM

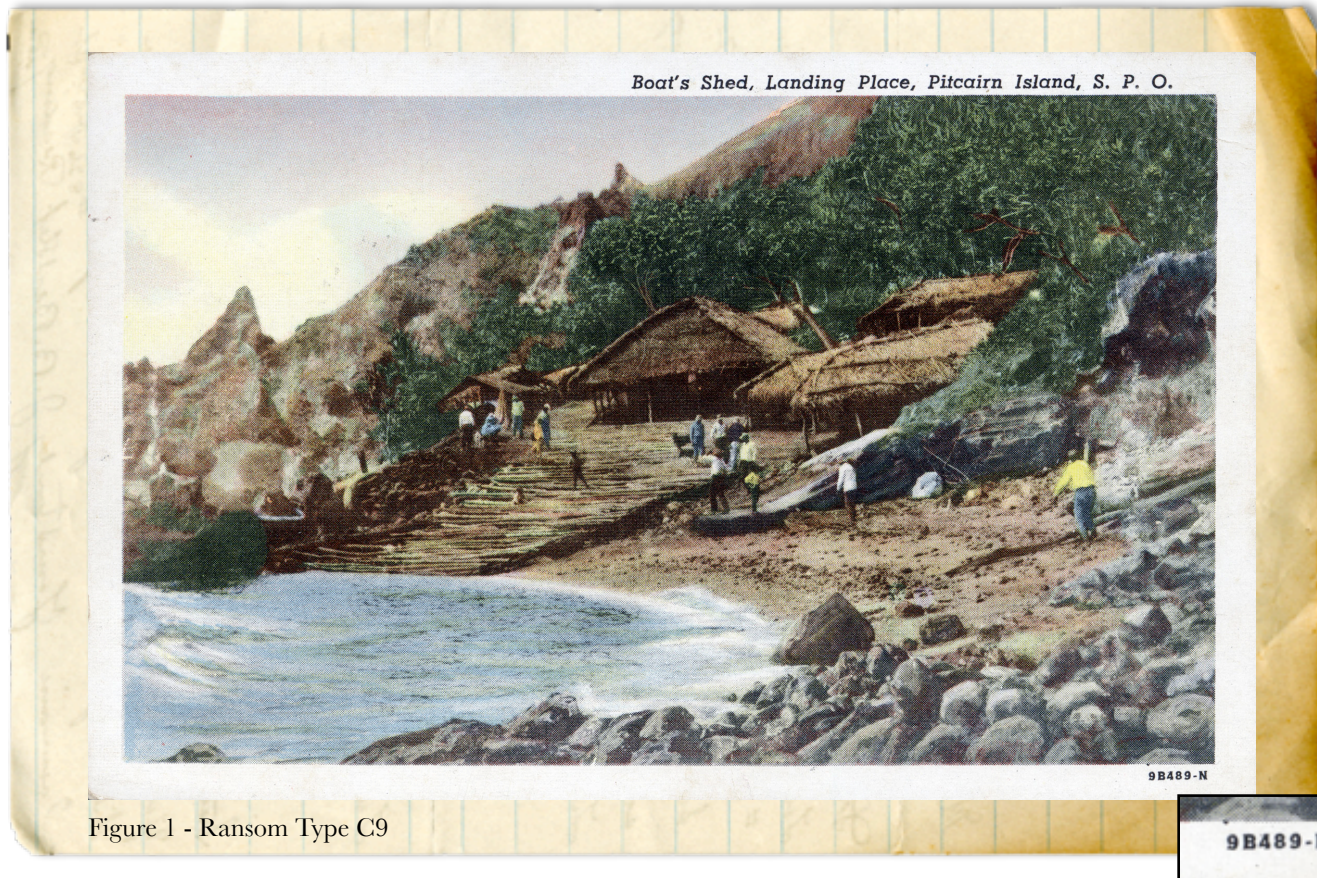


Figure 1 - Ransom Type C9

In my collection I have seven copies of the Curteich (Chicago) post card that have the caption "Boat's Shed, Landing Place, Pitcairn Island, S.P.O." It is an interesting view because it shows several things which are no longer there today. In particular, the small sandy beach which has been washed away by changing tides. The following is a description from *The Times* (UK) that mentions the sandy beach:

JULY 15, 1847

Her Majesty's brig Spy, Pitcairn's Island

Arrived off this island on the 26th of February, about 10 o'clock in the morning, and was boarded by George Adams and some more natives shortly after she hove to. George Adams is the son of the celebrated John Adams, the father of the colony. Went ashore in cutter, piloted by George Adams. Landing-place a very small sandy beach

with many rocks, and in the least breeze impracticable. We were met on the beach by some of the natives, who cordially welcomed us to Pitcairn's Island, and showed us the way to the market-place up a steep and rugged path, winding along the cliff, and through a beautiful variety of all kinds of tropical flowers and shrubs.

It is sad that this rather picturesque scene has changed, the thatched roofs have gone, though I guess that their modern replacements are much more resistant to bad weather.

The cards are catalogued as two printings in my 1999 *Pitcairn Postcard Catalogue*. Catalogue number C9 was printed in 1949 and carries the reference 9B489-N on the bottom right corner of the front. Catalogue number C17 was printed in 1964 with the reference 4DK-1150 on the back.



All the Curteich cards can be dated from the codes if you know how to translate them. Each code begins with a number and then a letter, A, B, C, or D. This letter refers to the decade, A being the 1930s, B the 1940s, C the 1950s and D the 1960s, and the number preceding is the year. Thus, 9B489-N indicates that this card was printed in the year 1949 and that it was the 489th card manufactured that year by Curteich.

The backs of the two cards are different in that the 1949 card (C9) is printed in blue ink and the 1964 card (C17) is printed in green ink.

I now know of two more varieties. The first is more obvious than the second.



Figure 2 - Ransom Type C9a

Figure 2 is an overprint card produced for Floyd McCoy to use as a QSL radio card. My example confirms a radio contact with W5AFX (see Figure 4) made on March 17, 1957 with a gentleman in Oklahoma, USA. The front of the card has been overprinted in blue ink as have the contact details on the back. By enlarging the card greatly, I can see that the card is an overprint and not a totally new printing because the blue on the front is printed as a "spot color" blue and the main image uses four process colors. If the card was a new printing, then Floyd's text would also have been screened for four color process printing. It would be interesting to know how many cards were overprinted for Floyd.



Figure 3 - Spot color blue overprint



Radio WS-AFX
Date March 17th 1957
Time 0419 GMT
Your Sigs Phone 5:7
CW
Frequency 14.220
Transmitter crystal cont 30 Watts
Antenna See 45' high
Receiver Eddystone Value
Remarks saw presd to have
up gal + hope to c.u.
on land soon again
Pse Qsl. Tnx
Very 73
Floyd McCoy

POST CARD
Mr Arthur R. Lamarche
1523 N.W. 45th Street
Oklahoma City 18
Oklahoma
U.S.A.

GENUINE CURTIS-CHICAGO "GUY, AMERICAN ART" POST CARD (REG. U.S. PAT. OFF.)

Figure 4 - Reverse of Figure 2

The second variety is a little harder to see. It proves that there were two printings of the earlier card catalogued as C9. By holding a copy of the card so that light reflects off the picture side, it is possible to see the texture of the paper. One printing has smooth paper (Figure 5) and the other uses a slightly patterned, or linen finish paper (Figure 6).



Figure 5 - Ransom Type C9 with smooth finish



Figure 6 - Ransom Type C9 with linen finish

It is my opinion that the earliest cards printed were the linen finish cards. I have a card written by Floyd, not of the QSL type, that is dated December 16th 1950 and is linen finish. Another card was used on the New Zealand Shipping Company's *Ruahine* (which incidentally translates as "Old Lady"!), dated 4th January 1952, and this is also linen finish.

My only copy of the ordinary, smooth finish card is unused, but Floyd's overprinted QSL card is also of the smooth finish kind and, as already mentioned, this is dated 1957. My two examples of the 1964 printing, with its specially enhanced colors, are both printed on smooth paper. Please check your own examples of this card and see if your findings agree with mine.

A Big Gift for Pitcairn BY STEVE PENDLETON

British author and *Bounty* enthusiast Maurice Allward has made a gift to Pitcairn Island. Allward, the man who produced *Pitcairn Island-Refuge of the Bounty Mutineers*, has donated the proceeds from the final sales of his book. This makes the second monetary donation from book sales.

The first donation, which was in the amount of several thousand US Dollars, was used to get a dive compressor. It is now used for recreational diving and to help catch fish. The second donation, while not quite as large as the first, is still a nice piece of change. Mr. Allward has suggested several uses for this new money. One

possibility is the construction of a bell tower on the main square. Another might be to commission a carving to be placed in the island museum. Allward also said the book is now sold out and will probably not be reprinted. You might still find copies on eBay.



Friends and family of Pitcairn everywhere owe Mr. Allward a vote of thanks for an unselfish and caring act. The Editor of the *Pitcairn Log* salutes you!



Future Issues of Pitcairn Stamps - Part I

BY WILFRED BLOOM

Part I - Definitives

The *Bounty* definitives of 2007 are the eleventh such set released since the issuance of stamps for Pitcairn began in 1940. They are also the tenth such issue of Queen Elizabeth II's reign. Pitcairn's definitives have always had a relevance to the island, its people and history. Now is the time to ask, what should be the subject of the next definitive series, to be released in 2014 or 2015?

But first, a look at previous definitive subjects:

YEAR	SUBJECT
1940 and 1951	Scenes from island history (the <i>Bounty</i> , etc.) and island views
1957	The first QE II set shows island life (carvings, wheelbarrows, island scenes)
1964	Birds and boats
1967	1964 set overprinted in decimal currency
1969, 1973 and 1975	Island artifacts and island views
1977 and 1981	Activities of islanders, royalty
1984	Fish
1988	Historical ships
1995	Birds
2000	Flowers

Some thoughts on future issues (remember, there needs to be enough subjects to accommodate from ten to twelve designs):

Portraits of Island Families. This could include members of families now on Norfolk, and could show some of the sailors and others who joined the island community.

Tropical fruits. Pitcairn's fertile soil grows all kinds of delicious lemons, pomegranates, avocados, passion-fruit, coconuts and pineapples.

Editor's Note: As I was reading Mr. Bloom's article, I began to think some of these would make good definitive sets as well: Explorers and early visitors to the island; Stamp on stamp set for the 75th anniversary of the first (and probably most popular) Pitcairn stamps; Island crafts including painted leaves, carvings, basketry, etc.

If anyone has a suggestion, please inform the *Log*. All reasonable ideas will be printed. Remember, *Bounty Post* does subscribe to the *Log*, and they do value your ideas and opinions.

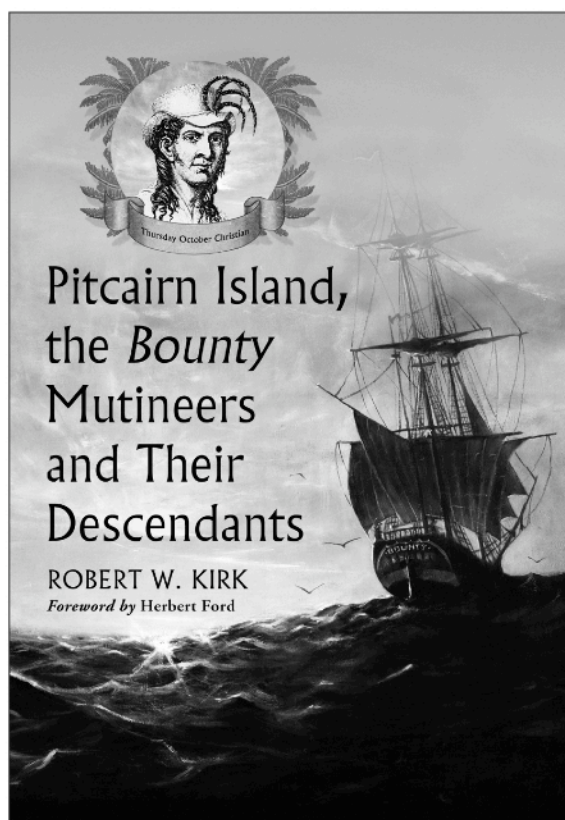
Part II: Commemorative ideas will appear in a future issue...



Pitcairn Trivia Answers

by Barbara Kuchau

- To whom is this quote attributed? "We will never leave you, Mr. Christian, go where you will!"
Edward Young at Tubuai
- In August, what important crops are harvested on Pitcairn?
Arrowroot and sugar cane
- Who is the Pitcairn Museum curator?
Lea Brown



Pitcairn Island, the Bounty Mutineers and Their Descendants

A History

ROBERT W. KIRK

263 pages \$55 hardcover (7 × 10)
Photographs, maps, notes, bibliography, index
ISBN 978-0-7864-3471-8 2008

This is a detailed history of the Pitcairn islanders from the original settlement through the opening years of the 21st century. The island's isolation is contrasted with the international attention garnered from its captivating history, making the society a one-of-a-kind historical curiosity.

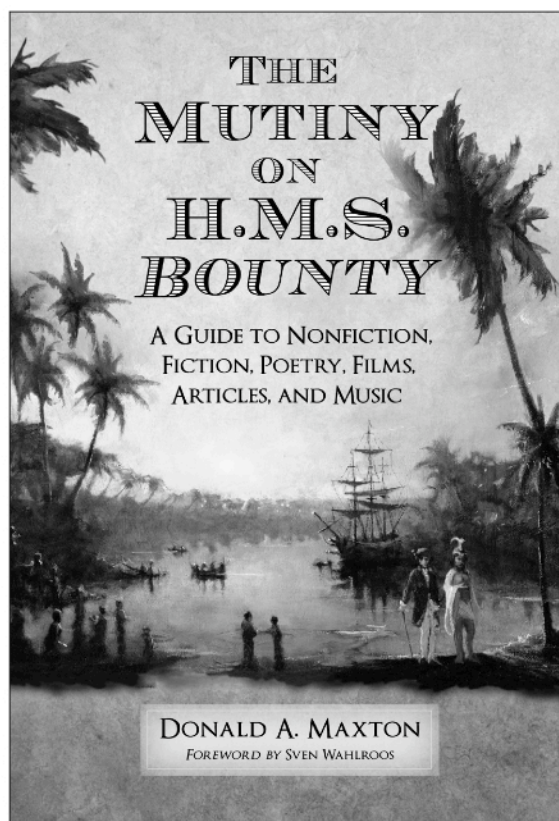
The Mutiny on H.M.S. *Bounty*

*A Guide to Nonfiction, Fiction,
Poetry, Films, Articles, and Music*

Donald A. Maxton

264 pages \$48.50 softcover (7 × 10)
83 photographs, references, appendices, bibliographies, index
ISBN 978-0-7864-3064-2 2008

From Bligh's firsthand account in 1790 through 2006, this copiously illustrated reference book examines more than 1700 books, articles and other materials dealing with the mutiny and its legacy.



McFarland

Box 611, Jefferson NC 28640 • Orders 800-253-2187 • FAX 336-246-4403 • www.mcfarlandpub.com

Terns and Noddies, Again BY JERRY JENSEN

In the July 2007 *Log*, I mentioned that there was another sheetlet that contained four differing rows of these stamps. I have since learned from the Agency that this is actually the counter sheet (Figure 2). These were actually shipped to all block of four subscribers.

Some receiving FDCs and the smaller miniature sheetlet from the Agency may be puzzled when they discover that the layout of the strip on their FDC (Figure 1) doesn't match either of the two rows on the miniature sheetlet (Figure 3). Since strips from the larger counter sheet were used to fabricate the FDC, there are actually four differing patterns for a FDC, one for each row in the larger counter sheet.



Figure 1 - FDCs showing all four stamp arrangements –

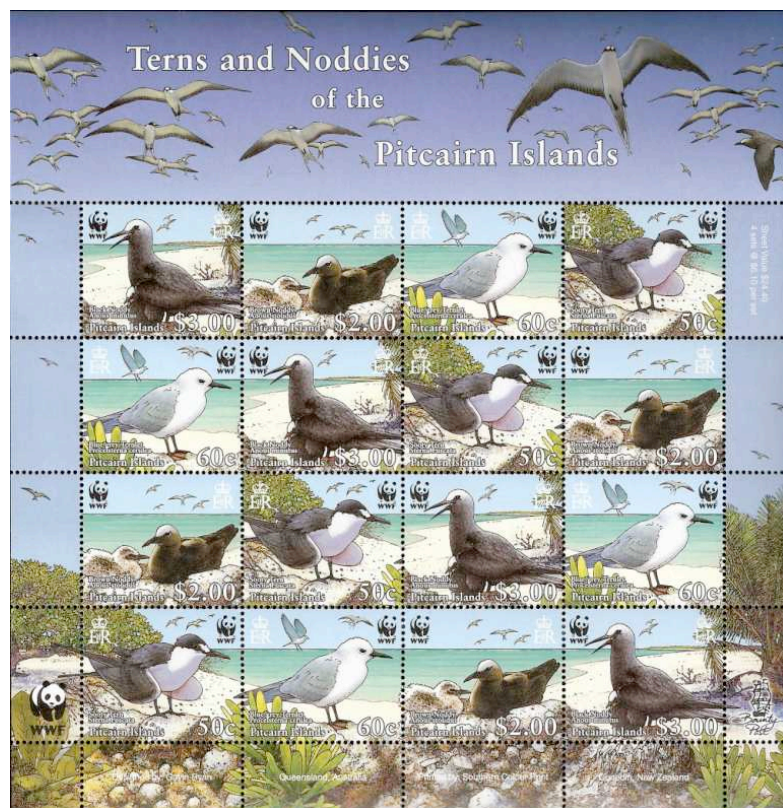


Figure 2 – Terns and Noddies counter sheet

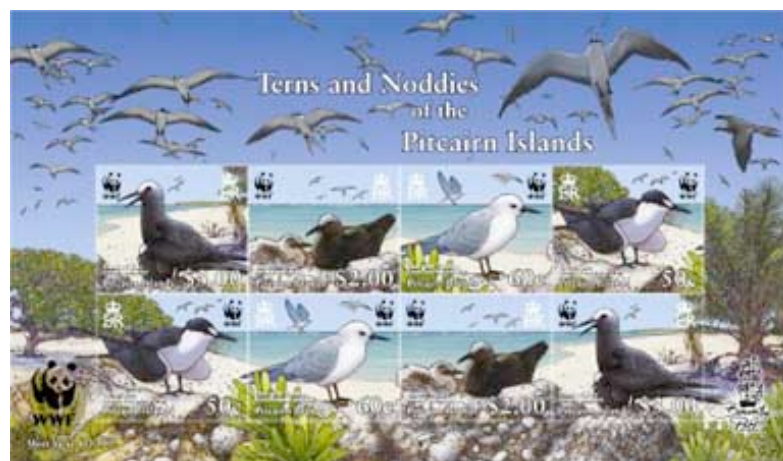


Figure 3 - Terns and Noddies miniature sheet

Samuel Clemens and Jack London both wrote fictional stories about Pitcairn.

Report on PISG at Hartford

StampShow 2008 was held from August 14-17 at the Connecticut Convention Center in Hartford. PISG operated a society booth at the show in conjunction with our friends from the Falkland Islands Philatelic Study Group (FIPSG) and the St. Helena, Ascension and Tristan da Cunha Philatelic Society (SHATPS).

The booth gave collectors interested in remote British territories the chance to talk and relax during the busy four day show, with a number of folks signing up for membership. It also provided an opportunity to take a few pictures...

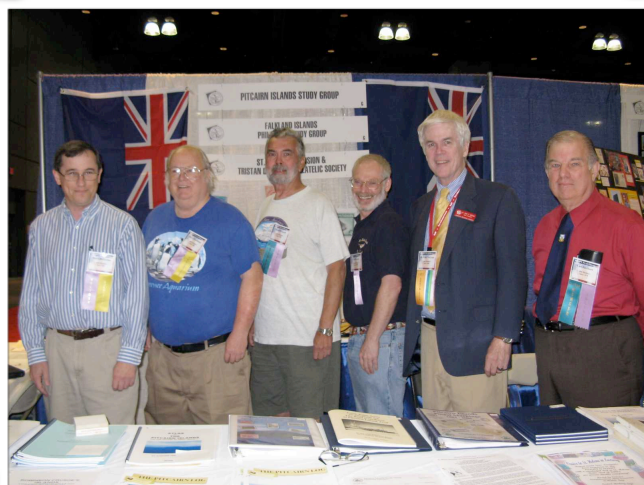


Figure 1 - Joint Society Booth being visited (l to r) by Mark Butterline, Steve Pendleton, Brad Brunzell, Ted Cookson, Peter McCann, and Carl Faulkner



Figure 2 - Steve Pendleton and Rob Schnieder at PISG Membership Meeting

Peter McCann Receives Luff Award



Former PISG President Peter P. McCann of University Park, Florida, has been selected as the recipient of the 2008 Luff Award for Outstanding Service to the American Philatelic Society.

The Luff Award was established in 1940 in memory of John N. Luff, APS president from 1907 to 1909, who was considered the most prominent American philatelist of his day. The award is considered the most prestigious prize in American philately.

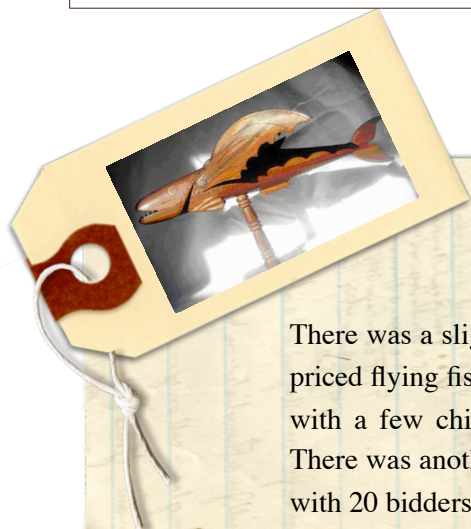
Peter is a past president of the APS and is currently Vice President of the Fédération Internationale de Philatélie (FIP). PISG extends its congratulations to Peter.



Auction Watch

This Auction Watch reports on lots from assorted Ebay offerings.

EBAY - JULY/SEPTEMBER 2008	FINAL PRICE
Item Number 140243622885 / 1938 Pitcairn to USA Paquebot Posting at Canal Zone w/Agency Cancel	\$229
Item Number 190233890804 / 1948 Registered Pitcairn to USA w/6d. Definitive Correct Rate	\$25
Item Number 300251885750 / 1964 Postally Used <i>Willem Ruys</i> Color Postcard Showing Coastline	\$128
Item Number 290254645825 / 1964 Postally Used <i>Willem Ruys</i> Color Postcard Showing Anchor	\$153
Item Number 290254645780 / 1964 Postally Used <i>Willem Ruys</i> Color Postcard (image on page 2)	\$203
Item Number 300254026173 / 1964 Postally Used <i>Willem Ruys</i> Color Postcard Showing Harbor	\$163
Item Number 300254026220 / Postally Used B&W Postcard Showing Pitcairn and John Christian, Damaged at Bottom	\$65
Item Number 140263910330 / 1938 PIRC Radio Cover - No Water Damage	\$103
Item Number 260279911362 / Pitcairn 1835 Commemorative Error	\$92
Item Number 320292407229 / Len Brown Folk Art Carved Wooden Fish Carving Pitcairn	\$69
Item Number 270272097414 / Pitcairn \$250 Gold Proof Coin 150th Anniversary of The Constitution	\$450



What's with the Fishies?

There was a slight problem with the last Auction Watch listing. There were two high priced flying fish lots (not just one). There was a flying fish carving by Pervis Young with a few chips. It reached a staggering \$730, with an unbelievable 35 bidders. There was another flying fish carving, this one by Reuben Christian. It reached \$455, with 20 bidders.

As of May 21, 2002, all British subjects (including the Pitcairners) became citizens of Great Britain and by extension the European Union.



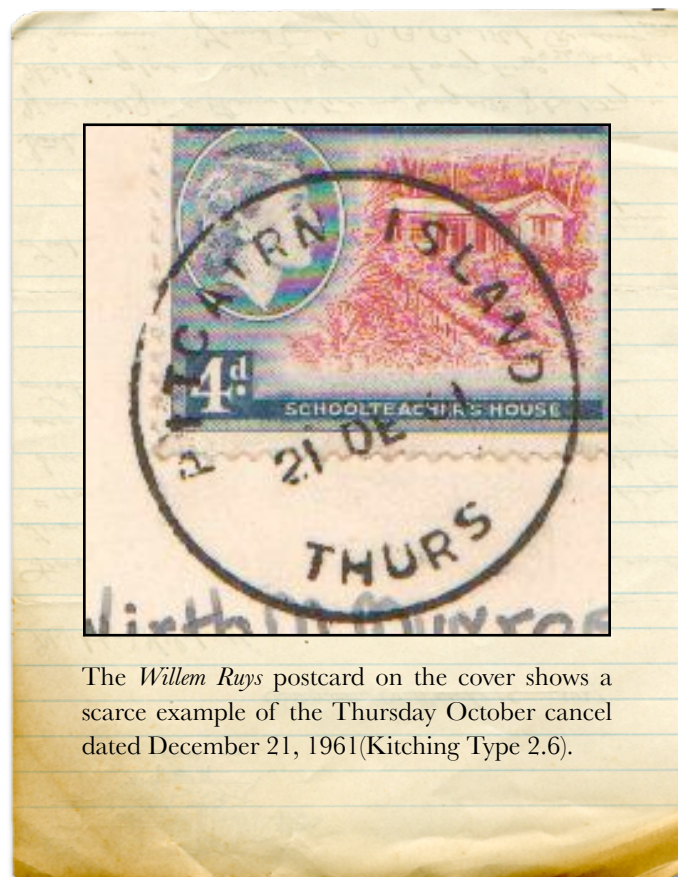
Continued from Page 2 ...

Herb Ford tells of another island connection. John Christian was the island magistrate during the era of the ship's visits. The cruise line gave John a 70-day courtesy cruise around the world. That must have been a huge adventure for him. His "humble appearance and very pleasant ways of meeting people" went a long way towards giving the island a positive image around the world.

Unfortunately bookings were not profitable on this route. In 1964 the ship was laid up and remodeled. It was then sold and renamed the *Achille Lauro*, a name which has now become infamous.

In October 1985, while cruising in the Mediterranean, she was seized by Palestinian terrorists. During the ensuing negotiations, one of the passengers, a disabled American, was callously murdered and the body thrown overboard.

But that wasn't the end of her trials. On December 2, 1994, while sailing off the coast of Somalia, she caught fire. Two passengers died in the ensuing evacuation. The fire could not be controlled and after a few days the *Willem Ruys-Achille Lauro* surrendered to the sea.



The *Willem Ruys* postcard on the cover shows a scarce example of the Thursday October cancel dated December 21, 1961 (Kitching Type 2.6).

The Unique Pitcairn Carving on the Royal Yacht *Britannia* BY TED COOKSON

The Prince Philip, Duke of Edinburgh, visited Pitcairn Island aboard the Royal Yacht *Britannia* in February 1971. In connection with the royal visit, Pitcairn resident Anderson Warren split a miro wood log into two equal pieces and carved two sharks which were mirror images of one another. All island residents signed the reverse of both carvings. The shark given to Prince Philip was put on display in the dining room of the royal yacht. The other shark was retained by Warren on the island and is now in the possession of his daughter, Melva Evans, who resides in Alaska.

The 5,862 gross-ton Royal Yacht *Britannia* was launched in April 1953 and commissioned at sea in January 1954. With a length of 412 feet (125 meters), a width of 55 feet

(17 meters), and a full complement of some 250 yachtsmen and up to 45 royal household staff, the diesel-burning royal yacht had a maximum speed of 22.5 knots and was capable of cruising over 2,500 miles at a speed of 18 knots.

Although planning for *Britannia* was begun under King George VI, after the death of her father in 1952 the new Queen Elizabeth and Prince Philip became directly involved in designing and furnishing the new yacht, selecting its fabrics, furniture and even the paintings. Perhaps because it had been furnished to her personal taste, the Queen once declared that the royal yacht was the single place where she could truly relax. *Britannia* contained not only family heirlooms and photographs but also gifts received during the royal family's travels around the world.



Britannia served Britain's royal family for over four decades. Aside from the various visits of state and commercial events hosted aboard the vessel, four royal honeymoons were also taken aboard the royal yacht. In 1960 Princess Margaret enjoyed a Transatlantic honeymoon cruise to the Caribbean. In 1973 Princess Anne honeymooned in the West Indies. In 1981 Prince Charles sailed in the Mediterranean on his honeymoon, and in 1986 Prince Andrew took his honeymoon cruising in the Azores. As a cost-cutting measure, *Britannia* was decommissioned in 1997 and converted into a museum. The royal yacht is berthed at Ocean Terminal in Leith, Scotland, only two miles from the center of Edinburgh.

My wife Barbara Stein and I visited *Britannia* on July 30, 2003. The good news is that Anderson Warren's carving was still prominently displayed on a wall in the dining room. The bad news is that, because the shark is attached to the wall, visitors cannot see the signatures on its reverse. However, the object is noted in the audio handset tour of the royal yacht, and a posted notice mentions that the carving was signed by all of the inhabitants of Pitcairn.

Information on visiting hours, entrance fees, and driving directions to the royal yacht is available at www.royalyachtbritannia.co.uk.

The author wishes to express thanks to the Royal Yacht Britannia for allowing use of the dining room photo, and to Tim Riches of the Isle of Lewis, Scotland, for allowing use of the wooden shark photo, to Melva Evans for help with fact-checking, and to Barbara Kuchau for her never-ending inspiration and assistance in preparation of this article.



Figure 1 – Anderson Warren's carved wooden shark hangs in the dining room of the Royal Yacht *Britannia*. Photo courtesy of Tim Riches.

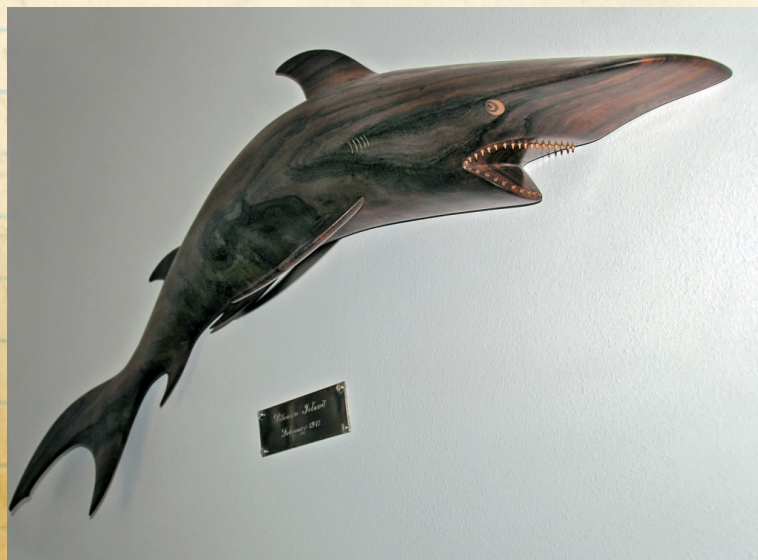


Figure 2 – The dining room of the Royal Yacht *Britannia* is formal. Photo courtesy of the Royal Yacht *Britannia*.



Flowers and Bees Stamp Issue



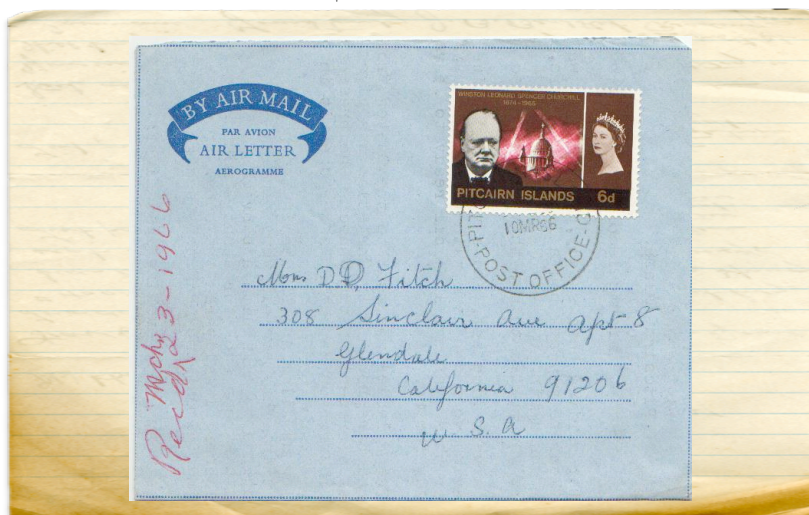
June 25, 2008 was the issue date for a set of four stamps and a souvenir sheet depicting local flowers and bees. The stamps are denominated \$1, \$1.20, \$1.50 and \$3. The souvenir sheet repeats the \$1.50 and \$3 designs, for a total face value of \$11.20. This issue is printed by the offset litho process, by Wyatt and Wilson of Christchurch. The designer was Sue Wickison. The stamps are perf 13.2x13.2, and are printed in panes of 25.

Bees are popular on Pitcairn, both as stamp subjects and because they are the foundation of a thriving honey business. Because of the isolation of the island, Pitcairn's bee population is practically disease-free. In addition they are very placid (the African strain never reached here), and their honey is of an exceptional quality-as anyone who has tasted it can tell you.

The type of bee now on Pitcairn is descended from two groups of Italian bees. These were introduced in 1978 and 1992. The bees have brown and yellow bands on the abdomen, and they are smaller than darker honeybees.

One of the major reasons for the quality of the honey is the variety of island flowers. The variety of nectars available has led to an intense fruitiness flavor in the honey.

The four stamp designs in the set all show the Italian bees. However, the flowers are different. The \$1 shows the yellow guava. Not only is this plant useful to the bees, but it also has value as a food crop. The \$1.20 features the portulaca, a succulent which develops masses of small flowers. The bees swarm to these. Sunflowers are seen on the \$1.50 stamp. These were not native to the island. Several varieties were grown especially to attract the bees. Flowers of the mountain chestnut tree are depicted on the \$3 value. This growth is only found in the Upper Cloud Forest. It is also known as laata. The tree has many lush red flowers.



In Upcoming Issues

- The Bounty Bell by Meralda Warren, Herb Ford and Steve Pendleton
- Reynolds Museum Model by Barbara Kuchau and Steve Pendleton
- Problems with the Quiros Expedition by Charles Anderson
- Pitcairn Airmail by Mark Butterline